



SWIFT
CREATING SMILES FOR LIFE



Love
Sprite



8ft-WIDE

Make your staycation a

safe-cation

SPRITE & SPRITE SUPER

safe-cation

Where can we go to live, break free?
The country, coast, hill or sea?

A cocoon from which we can all emerge
To find new life, far from this scourge

A place away, we can call our own,
Our bubble, our safe, our protected zone

Where we discover adventures galore
And together learn to live once more

Our home from home, our precious space
A self-contained and private place

We now control our destination
On our perfect safe-cation

Swift. June 2020



Contents

PG05 LOVE SPRITE - WHICH ONE IS FOR YOU?

PG07 SPRITE FEATURES

PG13 EXTERIOR STYLE

PG14 SMART CONSTRUCTION

PG16 THE SPRITE RANGE

PG18 FEATURES

PG21 FABRIC OPTIONS

PG22 TECHNICAL SPECIFICATION

PG27 BUILT WITH LOVE

PG28 WHERE TO BUY YOUR SPRITE



Built using the UK's leading SMART construction, you can be assured your Swift caravan is made to the highest quality. Find out more on page 14.





love
the beach



UK's best
selling caravan

WHICH ONE IS FOR YOU?



SPRITE

7'5"

FROM

£17,885

With a well-equipped kitchen and washroom, three opening front windows, low energy LED lighting and fast heat up Truma combi-boiler, Sprite continues to provide exceptional specification and style. What's more, last year's popular options, such as the panoramic sunroof and microwave oven, are now included as standard.



SPRITE SUPER

8'1"

FROM

£21,365

All the Sprite features you love, but with even more space to relax and unwind. The extra space allows for a wider opening central window and front chest, a spacious dining area and larger sleeping spaces, making it a perfect family caravan.



6





Sprite features

Step inside and the robust soft furnishings, contemporary woodgrain and stylish slate grey kitchen worktops add a breath of fresh air. With six single and four twin axle models across the Sprite and Sprite Super ranges, there are so many options for you to choose from.

- 1 Wide front chest featuring a matt white soft close drawer
- 2 'Langholme' interior soft furnishing scheme with 'Aralie Sen' woodgrain
- 3 Chrome plugs and USB sockets
- 4 Beech slat seat and bed bases with sprung hinged tops and ample storage
- 5 Panoramic sunroof with integrated curved blind system
- 6 Integrated locker, LED lighting, speakers and chrome handles





8





1

Stainless steel sink with removable extension drainer

2

Thetford 3-burner hob with glass lid cut-out safety feature, oven and grill

3

Dometic 100 litre fridge with removable freezer compartment

4

Modern slate grey worktop that complements the interior scheme

5

Control and monitor onboard systems with the 7" Swift Command touchscreen control panel

6

Ventilated microwave oven with digital display



1 Stylish wardrobe and storage with chrome handles

2 LED lighting and colour-coordinated headboard

3 Exclusive lightweight Duvalay Apollo Luxe mattress for a great night's sleep

4 Fully fitted washroom with toilet, shower cubicle and vanity bowl

5 Dual fuel heating with Truma combi boiler for Grade 3 comfort

6 Ecocamel Orbit shower for a powerful shower head that uses less water



Love
Style





1 Fully moulded GRP front panel which is hail-resistant and leak-proof

2 'Edge' alloy wheels and a steel spare wheel

3 LED exterior light including a high-level awning light

4 Stylish LED light cluster housed within the solid GRP back panel

5 Fixing bars for optional Thule rear-mounted cycle rack

6 Panoramic front sunroof with fully integrated curved blind system

7 Flush fitting triple front window with fitted blinds and curtains

8 Large capacity front locker for gas bottles with 2 compression locks

SMART CONSTRUCTION



SMART is the basis of our intelligent construction system used across our entire touring caravan range. Strong, Modern, Aerodynamic, Resilient and Tested, you can be assured your Swift caravan is a high quality, engineered product.



STRONG

The Strong timberless body frame uses 'PURE', a tough, hard polyurethane based product, that is totally impervious to water and has been proven through use.



MODERN

The SMART construction system uses Modern materials, and has been developed to ensure the exterior profiles maintain the Modern, desirable looks our caravans are renowned for.



AERODYNAMIC

We continue to lead the way in Aerodynamics, using Computational Fluid Dynamics to help shape the bodysell for better fuel consumption and safer towing.



RESILIENT

All fixings are made into the 'PURE' material to a pre-defined depth. 'PURE' is totally impervious to water and has no veins. This means there is no passage for water from the outer skin, making the caravan highly Resilient to moisture.



TESTED

Extensive safety and durability Testing at the Millbrook track, and cold chamber Testing down to minus 15°C and beyond, puts prototypes through conditions most products will never have to experience in a lifetime; all part of the Swift ethos to deliver the best products to you.





HAIL RESISTANT GRP ROOF

Woven GRP outer surface provides greater durability from the elements.



GRP SIDEWALLS

Balanced panel side walls with GRP outer and inner skins. GRP is more impact resistant than aluminium and can be easily repaired, ensuring long lasting good looks, and helping protect your investment for the future.



'SMART' GRP sidewall during the production process.



FLOOR CONSTRUCTION

'Sandwich' floor construction with ply upper, high rigidity Styrofoam core and GRP outer skin to provide greater durability from the elements.

THE SPRITE RANGE

SPRITE

ALPINE 2

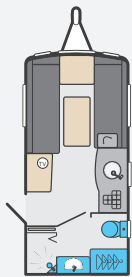


Length
6.05m/19'10"

Width
2.25m/7'5"

Weight (MTPLM)
1218kg

Berths
2



ALPINE 4

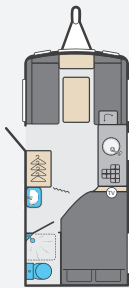


Length
6.45m/21'2"

Width
2.25m/7'5"

Weight (MTPLM)
1284kg

Berths
4



MAJOR 4 SB



Length
7.54m/24'9"

Width
2.25m/7'5"

Weight (MTPLM)
1442kg

Berths
4



MAJOR 4 EB



Length
7.54m/24'9"

Width
2.25m/7'5"

Weight (MTPLM)
1476kg

Berths
4



MAJOR 6 TD

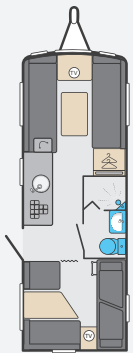


Length
7.54m/24'9"

Width
2.25m/7'5"

Weight (MTPLM)
1528kg

Berths
6



QUATTRO EW



Length
7.98m/26'2"

Width
2.25m/7'5"

Weight (MTPLM)
1610kg

Berths
6



QUATTRO FB

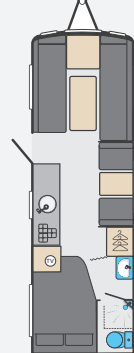


Length
7.98m/26'2"

Width
2.25m/7'5"

Weight (MTPLM)
1630kg

Berths
6



SPRITE SUPER

SUPER MAJOR 4 SB*

New

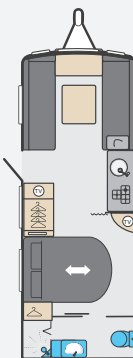


Length
7.54m/24'9"

Width
2.46m/8'1"

Weight (MTPLM)
1541kg (Est)

Berths
4



SUPER QUATTRO FB

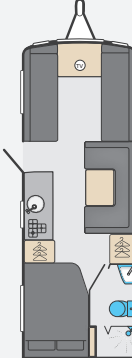


Length
7.98m/26'2"

Width
2.46m/8'1"

Weight (MTPLM)
1704kg

Berths
6



SUPER QUATTRO DB

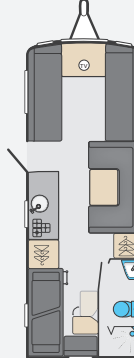


Length
7.98m/26'2"

Width
2.46m/8'1"

Weight (MTPLM)
1700kg

Berths
6



*Available from February 2021



FEATURES

EXTERIOR

- European Whole Vehicle Type Approval ensures compliance with strict weight, dimension and safety regulations
- EN1645 Grade 3 classification for heating and thermal insulation
- Overall body width 2.25/7'5" (Sprite only)
- AL-KO galvanised steel chassis with Euro-axle
- SMART construction with GRP body panels:
 - Strong, moisture proof 'PURE' polyurethane timber-less framed body shell with polystyrene insulation core (25mm in sidewalls, 32mm in roof)
 - Robust balanced panel side walls with GRP outer and inner skin
 - 44mm 'sandwich' floor construction with GRP outer skin, ply upper and high rigidity Styrofoam core
 - Hail resistant exterior GRP roof, fully bonded for extra strength and flatness
 - Sweeping front panel in GRP with triple flush fitting opening windows and exclusive LED front marker lights
 - Full height GRP rear panel
- Streamlined aerodynamic profile
- Stylish exterior graphics scheme
- Exclusive LED rear light clusters, LED high level marker and brake light which provide better visibility in poor weather
- LED side marker running lights
- Wide access gas locker door with two compression locks
- Fully double-glazed opening windows (no single-glazed cold areas)
- Screen printed windows with graphite grey tint
- Surface mounted impact resistant skirt system
- Semi-recessed body colour awning rail both sides
- 'Edge' alloy wheels
- Steel spare wheel
- High tyre rating - a load margin is included in the tyre specification
- 13-pin 'Jaeger' 12V car connector
- AL-KO overrun device
- AL-KO carabineer breakaway cable
- Step-on hitch cover for easier cleaning of front windows
- Bulkhead mounted regulator suitable for use with either propane or butane bottles
- LED awning light
- Exterior one-piece door with interior moulded liner, chrome handle and concealed hinges
- Exterior access battery box with mains electric inlet (battery not included)
- Entrance step
- Fixing bars for optional Thule rear mounted cycle rack

INTERIOR

- 1.95m (6'5") headroom
- Panoramic front sunroof incorporating fully integrated curved blind system, recessed lighting and speakers
- 'Langholme' soft furnishing scheme with complementary carpet colour
- Curtains to all windows (except washroom and bunk bed windows - model specific)
- Twin curtain track for improved hanging and ease of use
- 'Aralie Sen' woodgrain with complementary furniture and 'Aralie Sen' overhead lockers doors (except kitchen)
- Positive overhead locker catches for secure storage on the move with chrome handles
- Side corner opening lockers
- Shelves in selected lockers for extra storage
- Chrome effect sockets and switches
- Wide front chest featuring a soft close drawer with concealed drawer inside and convenient slide-out extending top (except Quattro EW)
- Stylish front binnacle design incorporating dedicated chrome effect socket surrounds (except Quattro EW)
- Sectioned removable carpets for flexibility (not washroom)
- French Oak effect, high impact, scratch resistant floor lino
- Two scatter cushions (four in Quattro EW)
- Seat bases featuring spaceframe construction with full front access and space for larger items
- Tri-foam cushioning to seat and backrests for seating and sleeping comfort
- Seat and backrest ventilation boards (model specific)
- Beech slat seat and bed bases for extra comfort and sprung hinged tops for easy access
- Bed make-up system with slats retained on track (model specific)
- Exclusive Duvalay Duvalite Apollo Luxe mattress containing Freshtec - a market leading high spec foam offering maximum airflow for a cool, comfortable good night's sleep (model specific)
- Fixed beds with aluminium bed frames to maximise strength and storage space
- Areas under beds and seats, and washroom areas warmed by Truma blown air system
- Mini-Heki rooflights with flyscreen and adjustable concertina blind in kitchens and bedrooms (model specific)
- Midi-Heki rooflight with flyscreen and adjustable concertina blind in lounge
- Freestanding table (suitable for full-size place settings)
- Modern slate grey worktop and table top colour to complement the interior fabric scheme
- Durable stainless steel kitchen sink
- Removable extension drainer with dedicated storage
- Foldaway kitchen worktop extension (model specific)
- Wire basket in kitchen cupboard
- Cutlery drawer on smooth-action steel runners
- Chrome finish crockery rack
- Chrome effect swivel spout kitchen and vanity taps for improved use
- Thick washroom doors with domestic style locks and handles
- Easy clean white gloss walls in shower area
- Rectangular vanity bowl for easier washing (model specific)
- Shower bi-fold door retained on track for improved access with travel lock (Alpine 2, Major 4 SB, Major 6 TD, & Quattro EW)
- One piece 'Vellamo' shower cubicle with curved sliding door (Major 4 EB)
- Micro-Heki rooflight in all washrooms
- Cassette flyscreens and blinds on all windows
- Door flyscreen with easy concertina action
- Retained embroidered entrance mat

EQUIPMENT

- Exclusive Swift Command control system with large 7" LCD colour touchscreen panel with improved user interface and functionality featuring;
 - Integrated DAB and FM radio tuning and sound setting control
 - Simple controls for monitoring and managing:
 - Power
 - Battery selection, battery level meter and power usage
 - 230V AC load limiter (settable between 5 amps & 16 amps)
 - Solar panel charging levels (where fitted)
 - Heating control of Truma system
 - Environment monitoring with internal and external temperature and internal humidity levels
 - Selected lighting control
 - Air-conditioning compatible with Dometic and Truma (dealer fit option, model dependent)
 - Refrigeration via CI-bus connection
- Swift Command App with interface that is easier to use and more intuitive, enabling you to manage and monitor key vehicle functions from your mobile device including power, heating and selected lighting
- Incorporates a simpler connectivity selection:
 - Bluetooth connectivity when with the vehicle
 - Wi-Fi / GSM connectivity when away from the vehicle (subject to network coverage)
 - Includes the useful 'Places of Interest' feature including 'Campsites' from the Camping & Caravanning Club and Swift dealership locations
- Dual fuel heating with Truma Combi Boiler
- Digital programmable controller for heating and hot water
- Thetford 3 burner hob with glass lid cut out safety feature, oven and separate grill
- Ventilated microwave oven with digital controls built at an easily accessible level
- Dometic 100 litre, electronic ignition fridge with removable freezer compartment, black effect finish and digital controls
- Ecocamel Orbit shower head with on/off button for a powerful shower that uses less water
- Thetford C260 toilet with electric flush and 18 litre wheeled waste tank
- High flow rate inboard pump with chrome effect taps for reliable, high performance water supply
- Inboard semi-rigid fresh water pipes
- Large bore underslung rigid waste pipes
- Isolation taps for gas appliances
- Fully protected mains electric system
- 25 amp switchmode charger/transformer
- LED lighting throughout interior including:
 - Downlights in lounge
 - Over locker lighting
- Status 570 directional digital / analogue TV/FM aerial and booster
- TV station with 230V, 12V and aerial sockets (two in selected models)
- TV bracket including a travel lock where applicable (Sprite only)
- A minimum of four 230V sockets throughout and twin USB points for easy charging of portable devices
- Additional coat hooks or towel ring (model specific)
- 25 metre mains hook-up cable

SAFETY AND SECURITY

- Swift Command Tracker, a Thatcham Category S7 approved pro-active tracker pre-installed as part of Swift Command system (subject to annual subscription)
- Convenient one-key high security locks
- AL-KO AKS 3004 stabiliser
- AL-KO secure wheel lock receiver (two on Quattro)
- Smoke alarm
- Carbon monoxide detector
- CRiS identity number labels to windows and caravan chassis
- VIN CHIP™ identification system concealed within construction to deter theft and aid quick recovery

CUSTOMER SERVICE

- Exclusive Connect Direct online account with direct access to Swift

OPTIONS

Factory Fit

- 'SwiftShield' stain-resistant, easy-clean seating fabric with soft suede like texture
- AL-KO ATC trailer stability control

Dealer Fit

- Alarm system (infra-red with tilt sensor and key-fob operation)
- AL-KO Secure wheel lock
- Wrap-around front seating in addition to drawer chest
- Weight plate upgrade (model dependent) Roof mounted air conditioning unit (model dependent)
- Roof mounted solar panel
- Yuasa YBX Active Leisure & Marine L36 battery
- Thule rail mounted rear cycle rack- Elite G2

SPRITE SUPER ENHANCEMENTS

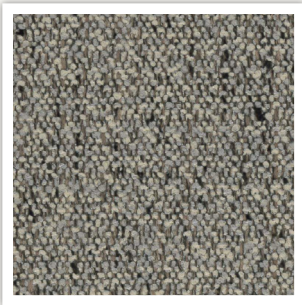
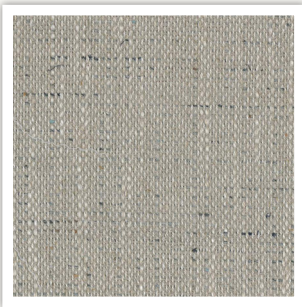
- Wide overall body at 2.46m/8'1"
- Extra wide access gas locker door with two compression locks
- Three flush fitting front opening windows with wider central window
- Spacious front lounge with an extra seven inches between seats (compared to standard Sprite models)
- Extra wide front chest featuring a soft close drawer with concealed drawer inside and convenient slide-out extending top
- Easy Accuride bed make up system on front and mid-dinette beds with beech slat seat and bed bases with fully opening hinged tops for extra comfort and easy access
- Larger beds in Major 4SB Quattro FB and DB include;
 - Front seating makes up into larger double bed (7'4" x 4'6" with chest in situ and 7'4" x 5'11" without chest) or two large single beds (5'11" x 2'5")
 - Domestic sized double fixed bed (FB)
 - Wider bunk beds (DB)
- Additional storage space including a second wardrobe (Quattro FB & Quattro DB)
- Spacious washroom with dedicated shower
- Large mid-dinette with wrap-around seating with freestanding telescopic table (Quattro FB & Quattro DB)
 - o part of bed make up
- Curved swivel table and storage seat at rear (Quattro DB only)



FABRIC OPTIONS

Within the Sprite range there are two fabric options available; the 'Langholme' scheme that comes as standard and the optional 'SwiftShield' scheme (see below). Please ask your dealer for full details.

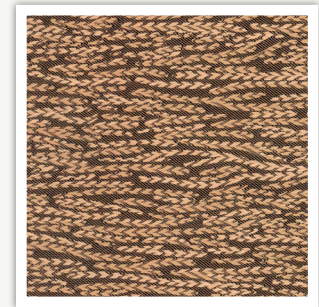
SEATING



CUSHION

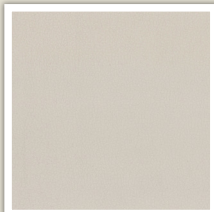
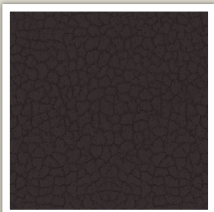


WALLBOARD

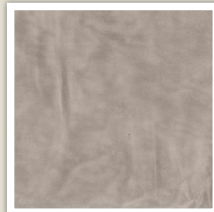


SWIFTSHIELD

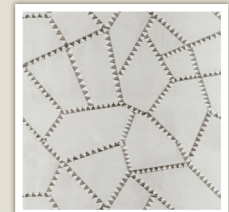
SEATING



CUSHIONS



CURTAINS



WHAT IS SWIFTSHIELD?

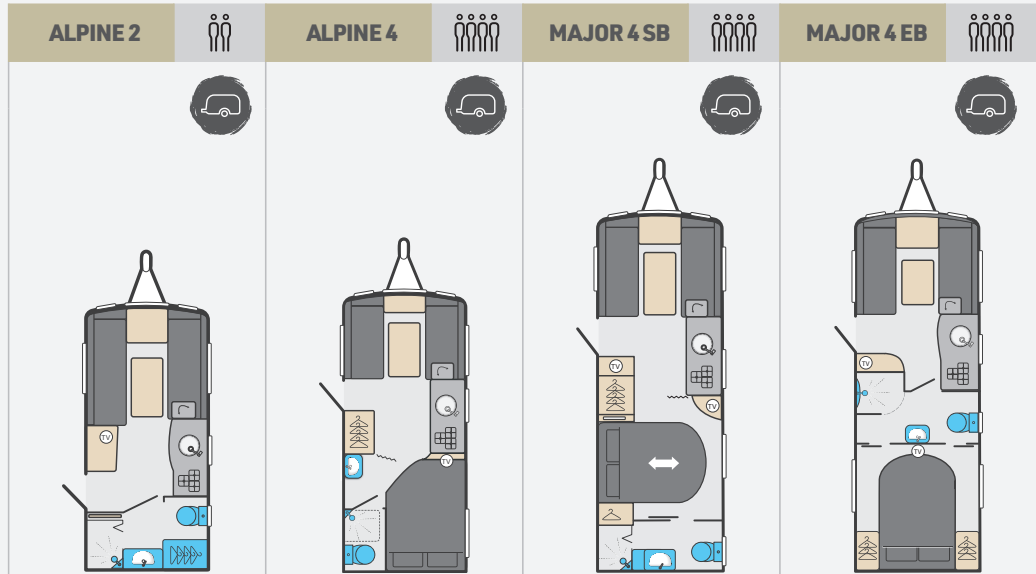


SwiftShield fabric has a soft suede type feel and has been treated during manufacturing to resist stains. It is very easy to clean and just requires a soft cloth dampened with water to remove most stains. SwiftShield is exclusive to Swift Group, you can find out more on Swift TV.

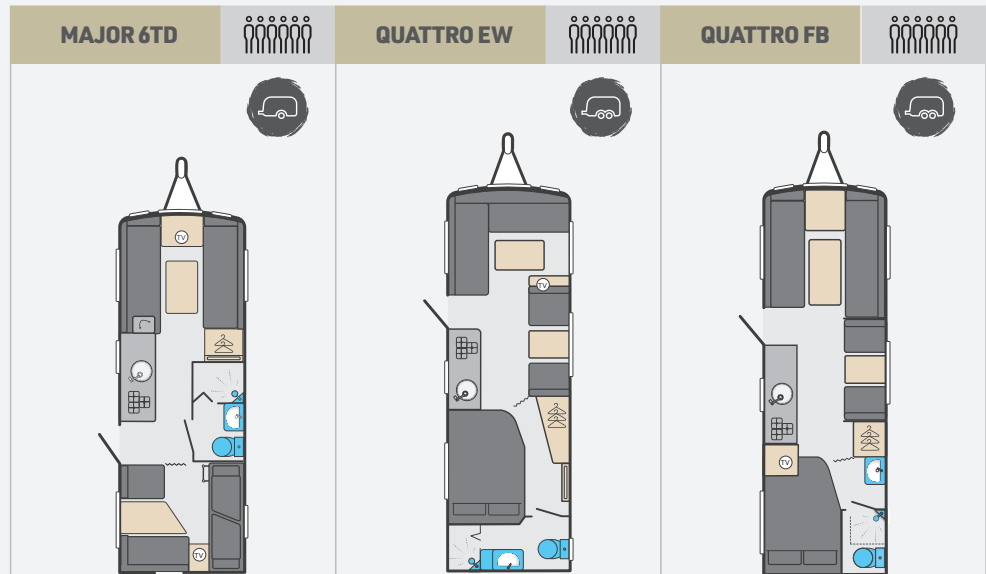
swifttv.co.uk



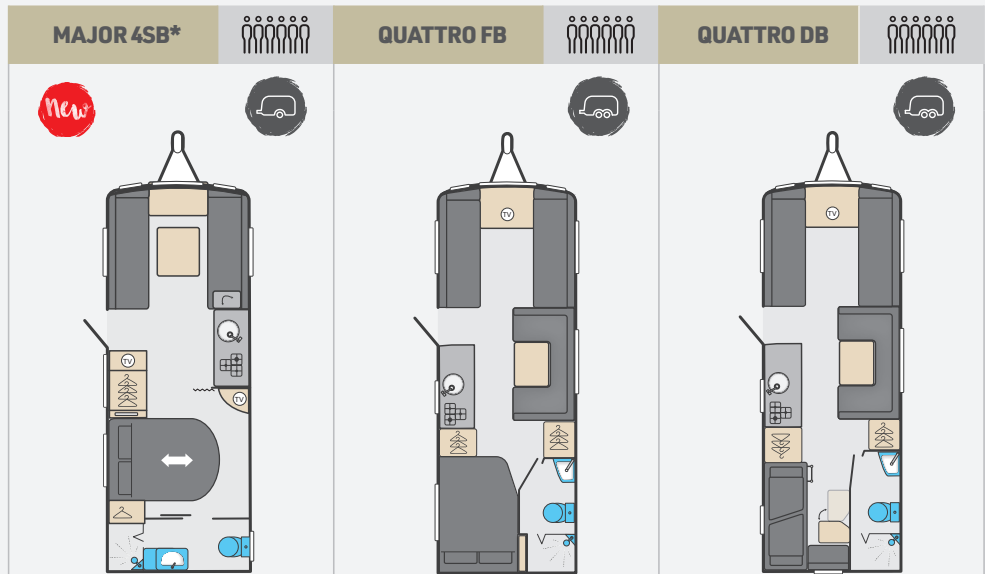
TECHNICAL SPECIFICATION



| | | | | |
|--|------------------------------|-----------------------------|-----------------------------|-----------------------------|
| Berths | 2 | 4 | 4 | 4 |
| Number of Axles | 1 | 1 | 1 | 1 |
| Internal Length (at bed box height) | 4.34m / 14'3" | 4.74m / 15'7" | 5.83m / 19'2" | 5.83m / 19'2" |
| Overall Width* | 2.25m / 7'5" | 2.25m / 7'5" | 2.25m / 7'5" | 2.25m / 7'5" |
| Overall Height (inc. TV Aerial)* | 2.59m / 8'6" | 2.59m / 8'6" | 2.59m / 8'6" | 2.59m / 8'6" |
| Maximum Internal Headroom | 1.95m / 6'5" | 1.95m / 6'5" | 1.95m / 6'5" | 1.95m / 6'5" |
| Overall Length* | 6.05m / 19'10" | 6.45m / 21'2" | 7.54m / 24'9" | 7.54m / 24'9" |
| Awning A / A Dimension | 8.59m / 28'2" | 8.99m / 29'6" | 10.08m / 33'1" | 10.08m / 33'1" |
| Mass in Running Order (inc. tolerance) | 1097kg / 21.6cwt | 1139kg / 22.4cwt | 1286kg / 25.3cwt | 1320kg / 26.0cwt |
| Maximum Technical Permissible Laden Mass | 1218kg / 24.0cwt | 1284kg / 25.3cwt | 1442kg / 28.4cwt | 1476kg / 29.1cwt |
| Total User Payload | 121kg / 2.4cwt | 145kg / 2.9cwt | 156kg / 3.1cwt | 156kg / 3.1cwt |
| Personal Effects Payload | 121kg / 2.4cwt | 145kg / 2.9cwt | 156kg / 3.1cwt | 156kg / 3.1cwt |
| Options | 0kg / 0.0cwt | 0kg / 0.0cwt | 0kg / 0.0cwt | 0kg / 0.0cwt |
| Tyre Size | 185 R14C 102 Q | 185 R14C 102 Q | 185 R14C 102 Q | 185 R14C 102 Q |
| Thermal Insulation Grade | THREE | THREE | THREE | THREE |
| BED SIZES | | | | |
| Front Double | 202cm x 180cm / 6'8" x 5'11" | 202cm x 128cm / 6'8" x 4'2" | 202cm x 159cm / 6'8" x 5'3" | 202cm x 159cm / 6'8" x 5'3" |
| Or Front Nearside Single And Front Offside Single | 190cm x 72cm / 6'3" x 2'4" | | 159cm x 72cm / 5'3" x 2'4" | 159cm x 72cm / 5'3" x 2'4" |
| Rear Double | 180cm x 72cm / 5'11" x 2'4" | 189cm x 132cm / 6'2" x 4'4" | 159cm x 72cm / 5'3" x 2'4" | 159cm x 72cm / 5'3" x 2'4" |
| Side Double Offside | | | 185cm x 133cm / 6'1" x 4'4" | 190cm x 133cm / 6'3" x 4'4" |
| Side / Rear Single Offside | | | | |
| Side / Rear Single Nearside | | | | |
| Middle Side Bunk Offside | | | | |
| Middle Side Bunk Nearside | | | | |
| Side Fixed Lower Bunk | | | | |
| Side Fixed Upper Bunk | | | | |



| | | | |
|--|------------------------------|-----------------------------|------------------------------|
| Berths | 6 | 6 | 6 |
| Number of Axles | 1 | 2 | 2 |
| Internal Length (at bed box height) | 5.83m / 19'2" | 6.27m / 20'7" | 6.27m / 20'7" |
| Overall Width* | 2.25m / 7'5" | 2.25m / 7'5" | 2.25m / 7'5" |
| Overall Height (inc. TV Aerial)* | 2.59m / 8'6" | 2.59m / 8'6" | 2.59m / 8'6" |
| Maximum Internal Headroom | 1.95m / 6'5" | 1.95m / 6'5" | 1.95m / 6'5" |
| Overall Length* | 7.54m / 24'9" | 7.98m / 26'2" | 7.98m / 26'2" |
| Awning A / A Dimension | 10.08m / 33'1" | 10.52m / 34'6" | 10.52m / 34'6" |
| Mass in Running Order (inc. tolerance) | 1352kg / 26.6cwt | 1430kg / 28.1cwt | 1450kg / 28.5cwt |
| Maximum Technical Permissible Laden Mass | 1528kg / 30.1cwt | 1610kg / 31.7cwt | 1630kg / 32.1cwt |
| Total User Payload | 176kg / 3.5cwt | 180kg / 3.5cwt | 180kg / 3.5cwt |
| Personal Effects Payload | 176kg / 3.5cwt | 180kg / 3.5cwt | 180kg / 3.5cwt |
| Options | 0kg / 0.0cwt | 0kg / 0.0cwt | 0kg / 0.0cwt |
| Tyre Size | 185 R14C 102 Q | 185 / 70 R14 88 T | 185 / 70 R14 88 T |
| Thermal Insulation Grade | THREE | THREE | THREE |
| BED SIZES | | | |
| Front Double | 202cm x 180cm / 6'8" x 5'11" | 206cm x 134cm / 6'9" x 4'5" | 202cm x 180cm / 6'8" x 5'11" |
| Or Front Nearside Single | 190cm x 72cm / 6'3" x 2'4" | | 180cm x 72cm / 5'11" x 2'4" |
| And Front Offside Single | 180cm x 72cm / 5'11" x 2'4" | | 190cm x 72cm / 6'3" x 2'4" |
| Rear Double | | 194cm x 132cm / 6'4" x 4'4" | 192cm x 132cm / 6'4" x 4'4" |
| Side Double Offside | | | |
| Side / Rear Single Offside | | 180cm x 62cm / 5'11" x 2'0" | 180cm x 62cm / 5'11" x 2'0" |
| Side / Rear Single Nearside | 180cm x 67cm / 5'11" x 2'2" | | |
| Middle Side Bunk Offside | | 176cm x 59cm / 5'9" x 1'11" | 176cm x 59cm / 5'9" x 1'11" |
| Middle Side Bunk Nearside | 176cm x 59cm / 5'9" x 1'11" | | |
| Side Fixed Lower Bunk | 183cm x 57cm / 6'0" x 1'10" | | |
| Side Fixed Upper Bunk | 183cm x 57cm / 6'0" x 1'10" | | |



| | | | |
|--|-----------------------------|------------------------------|------------------------------|
| Berths | 4 | 6 | 6 |
| Number of Axles | 1 | 2 | 2 |
| Internal Length (at bed box height) | 5.83m / 19'2" | 6.27m / 20'7" | 6.27m / 20'7" |
| Overall Width* | 2.46m / 8'1" | 2.46m / 8'1" | 2.46m / 8'1" |
| Overall Height (inc. TV Aerial)* | 2.59m / 8'6" | 2.59m / 8'6" | 2.59m / 8'6" |
| Maximum Internal Headroom | 1.95m / 6'5" | 1.95m / 6'5" | 1.95m / 6'5" |
| Overall Length* | 7.54m / 24'9" | 7.98m / 26'2" | 7.98m / 26'2" |
| Awning A / A Dimension | 10.12m / 33'2" | 10.56m / 34'8" | 10.56m / 34'8" |
| Mass in Running Order (inc. tolerance) | 1385kg / 27.3cwt EST | 1524kg / 30.0cwt | 1520kg / 29.9cwt |
| Maximum Technical Permissible Laden Mass | 1541kg / 30.3cwt EST | 1704kg / 33.5cwt | 1700kg / 33.5cwt |
| Total User Payload | 156kg / 3.1cwt | 180kg / 3.5cwt | 180kg / 3.5cwt |
| Personal Effects Payload | 156kg / 3.1cwt | 180kg / 3.5cwt | 180kg / 3.5cwt |
| Options | 0kg / 0.0cwt | 0kg / 0.0cwt | 0kg / 0.0cwt |
| Tyre Size | 195 / 70 R15C 104R | 185 / 70 R14 88T | 185 / 70 R14 88T |
| Thermal Insulation Grade | THREE | THREE | THREE |
| BED SIZES | | | |
| Front Double | 225cm x 163cm / 7'4" x 5'4" | 225cm x 180cm / 7'4" x 5'11" | 225cm x 180cm / 7'4" x 5'11" |
| Or Front Nearside Single | 163cm x 73cm / 5'4" x 2'5" | 180cm x 73cm / 5'11" x 2'5" | 180cm x 73cm / 5'11" x 2'5" |
| And Front Offside Single | 163cm x 73cm / 5'4" x 2'5" | 180cm x 73cm / 5'11" x 2'5" | 180cm x 73cm / 5'11" x 2'5" |
| Rear Double | 185cm x 133cm / 6'1" x 4'4" | 196cm x 135cm / 6'5" x 4'5" | |
| Side Double Offside | | 190cm x 134cm / 6'3" x 4'5" | 190cm x 134cm / 6'3" x 4'5" |
| Side / Rear Single Offside | | | |
| Side / Rear Single Nearside | | | |
| Middle Side Bunk Offside | | | |
| Middle Side Bunk Nearside | | | |
| Side Fixed Lower Bunk | | | 182cm x 72cm / 6'0" x 2'4" |
| Side Fixed Upper Bunk | | | 182cm x 72cm / 6'0" x 2'4" |

*Available from February 2021

MASSES: The masses are calculated in accordance with EU regulation 1230 / 2012 and NCC code of practice 304.

The Mass in Running Order (MRO) comprises:

1. The mass of the empty caravan as supplied by Swift including loose items such as the hook-up cable, kit bag, entrance step, manuals etc.

2. 10kg allowance for LPG

The MRO is calculated with the fresh water tank, toilet flush tank and water heater empty. If you travel with water in the fresh water tank, toilet flush tank and the water heater the payload will reduce accordingly.

The personal effects is based on the number of berths and the length of the caravan, and includes an allowance of 20kg for a leisure battery.

The Maximum Technical Laden Mass (MTPLM) is the maximum mass allowed when the caravan is fully laden.

WARNING: Under no circumstances should the MTPLM be exceeded.

BED SIZES: Please note that the front double bed sizes quoted are for seating configurations without chest of drawers. The front double bed width for a layout with a chest of drawers fitted will be reduced by 0.4m (1'4") from that stated.

AWNING SIZES: Due to the varying awning designs and sizes the awning sizes given are approximate only. Specific awning sizes must be confirmed by your dealer or the awning manufacturer prior to purchase.

The dimensions given are approximate due to slight variations in suspension ride heights, loading conditions and tyre pressures.

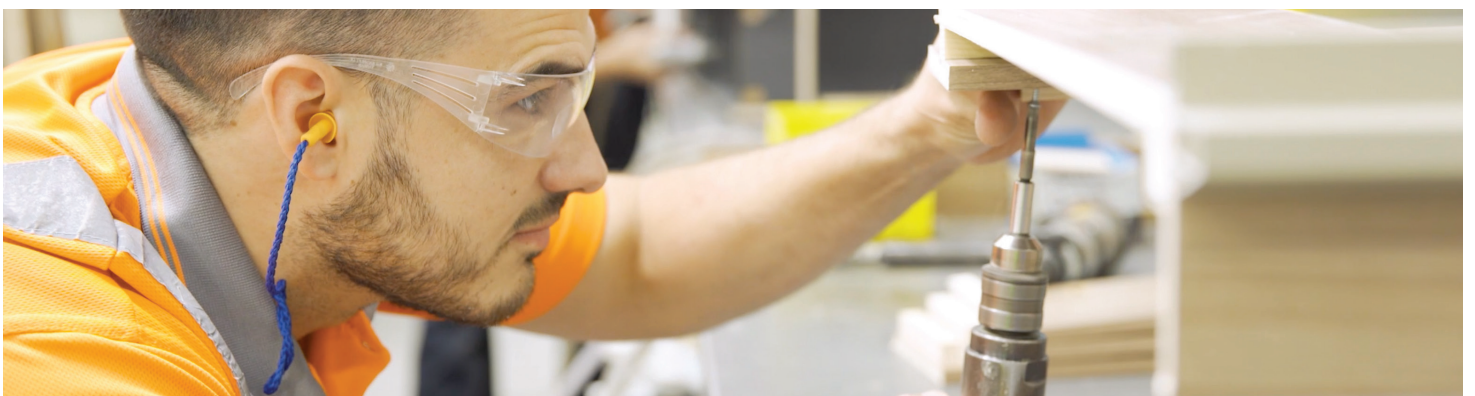
* Estimated weight or bed size.

Customers should verify the actual dimensions of their touring caravan before committing to anything that could be impacted by these dimensions.

Please note: Any dealer fit options will reduce the overall payload available to the user of the caravan. If you require additional payload it is possible to upgrade the MTPLM to the upper limit. Please contact your caravan dealer for more information.

LED ROAD LIGHTS: Certain vehicles may require a secondary fuse box when towing models fitted with LED road lighting.





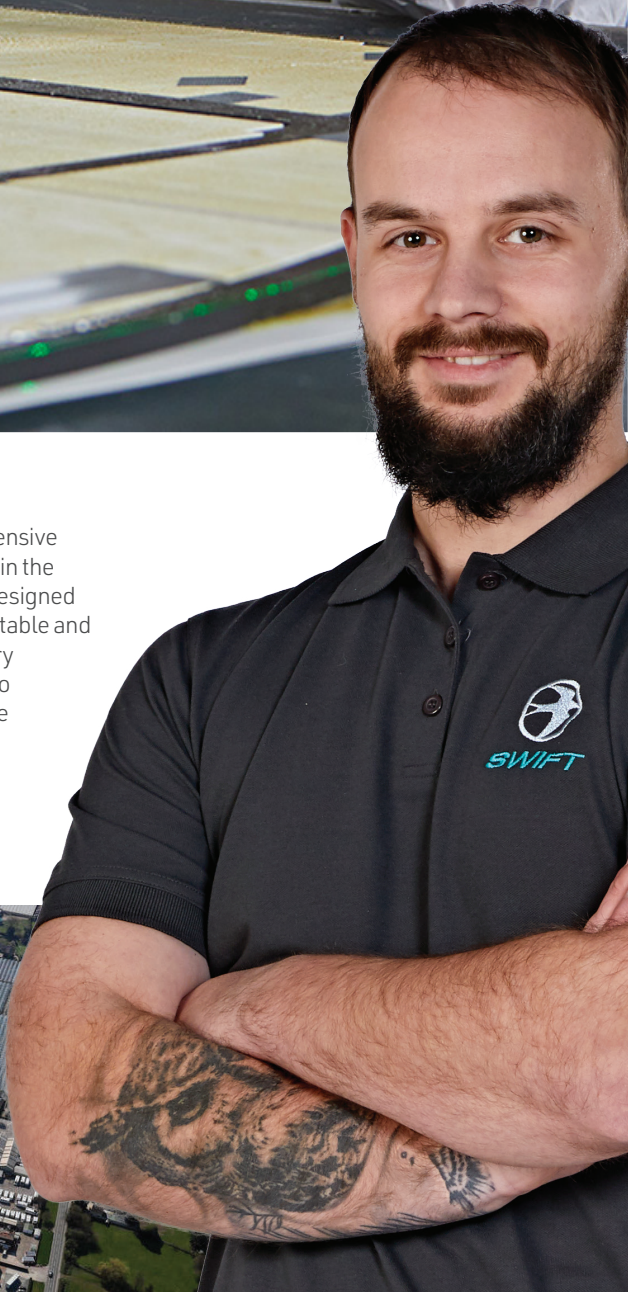


Built with love

From the first drawing right through to the moment you take the keys, each Swift leisure vehicle is built with love.

Every stage of the manufacturing process is completed with the greatest care and attention to detail, with the knowledge, experience and heart of generations of craftsmanship showing in all components. This, coupled with state-of-the-art technologies, allows Swift to deliver the highest standards of construction.

We undertake one of the most extensive research and testing programmes in the industry, and deploy innovations designed to help make your holidays comfortable and hassle-free. From our revolutionary SMART and SMART 3 technology to hardwearing interiors, Swift leisure vehicles are built to last.





SWIFT
CREATING SMILES FOR LIFE

TOURERS



SPRITE



CHALLENGER



ELEGANCE



BASECAMP

VIEW & DOWNLOAD
YOUR COMPLETE RANGE
OF SWIFT BROCHURES
HERE...
swiftgroup.co.uk/downloads
...OR CLICK ON
THE BROCHURE IMAGE

MOTORHOMES



SELECT



EDGE



ESCAPE



KON-TIKI SPORT

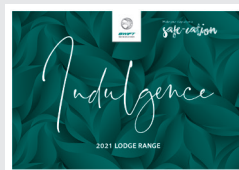


KON-TIKI

HOLIDAY HOMES & LODGES



HOLIDAY HOMES



LODGES



S-POD



Configure



Downloads



Social



Watch videos



Find a dealer

swiftgroup.co.uk

DISCLAIMER

This brochure does not constitute an offer by Swift Group Limited (Swift). Swift reserves the right to alter specifications and prices at any time as materials and conditions demand. Distributors and dealers sell Swift products on their own account and not as agents of Swift. Accordingly, they have no authority to bind Swift or to make any representation or undertaking whatsoever on behalf of Swift. All props are for photographic purposes only and are not included in the specification. Models shown may be fitted with optional extras. Issued October 2020.

CARAVANS • MOTORHOMES • HOLIDAY HOMES - MADE IN BRITAIN BY SWIFT

